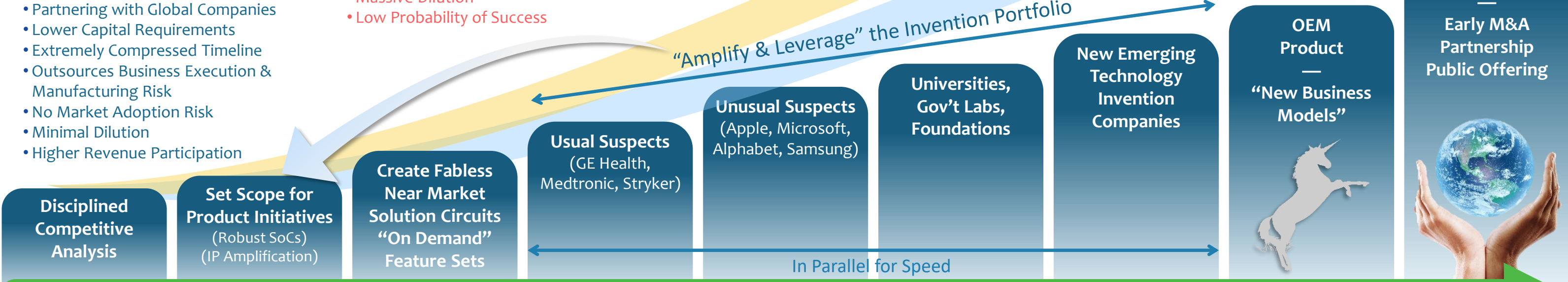
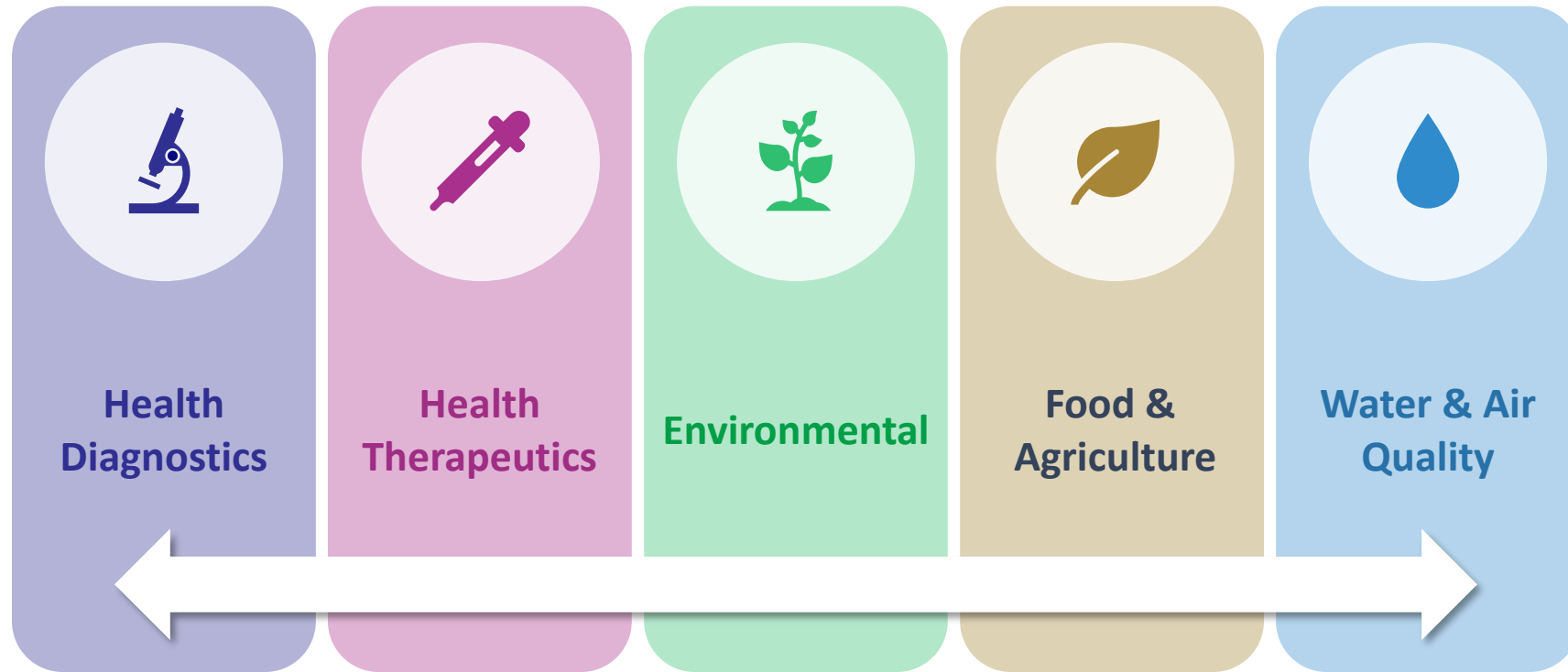


- X Operating Company**
- Requires too Much Capital
 - Takes too Long
 - Frequently Pivoting
 - Unnecessary Business Risk
 - High Market Adoption Risk
 - Massive Dilution
 - Low Probability of Success

- ✓ SPJV Invention Company (Fabless)**
- Partnering with Global Companies
 - Lower Capital Requirements
 - Extremely Compressed Timeline
 - Outsources Business Execution & Manufacturing Risk
 - No Market Adoption Risk
 - Minimal Dilution
 - Higher Revenue Participation



\$75M Valuation (Equivalent to a B Round from Powerful & Distinctive Circuit Seed IP Advantage) **3-5 Year Target >\$1B** (\$100M to \$250M per SPJV)



Strong growth will continue as sensors integrate to analytics, big data and cloud applications.



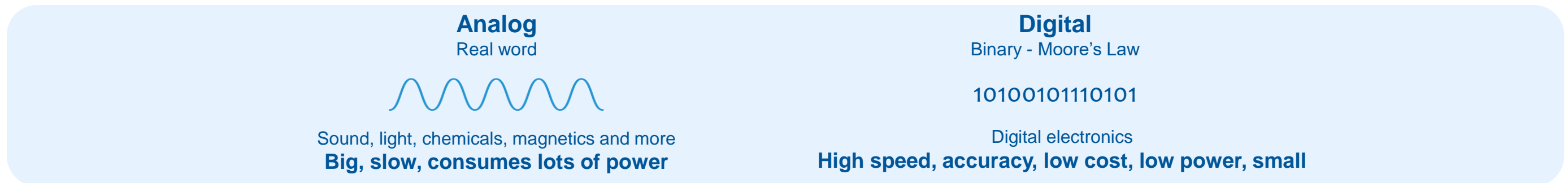
\$47.4B by 2020

* US average across different sources

Billions of people will benefit from new health care and life sciences technologies.

New economies will leap ahead (as per wireless vs. landline).

Sensory Seed's Circuit Seed™ technology takes the best of both worlds and unifies them:



Which result in products that can:

